



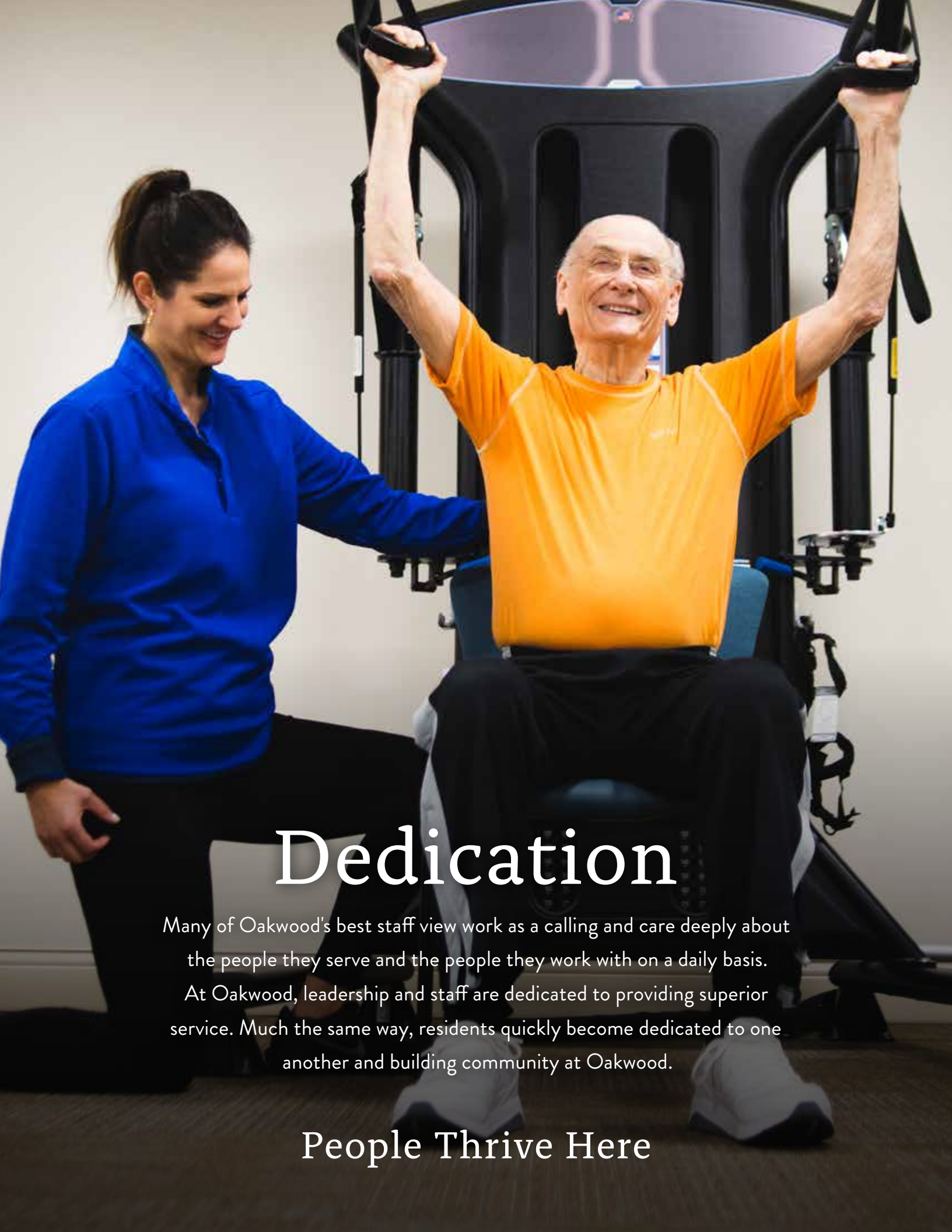
OAKWOOD

# Outlook

*News from Oakwood Lutheran Senior Ministries*

SPRING 2021





# Dedication

Many of Oakwood's best staff view work as a calling and care deeply about the people they serve and the people they work with on a daily basis. At Oakwood, leadership and staff are dedicated to providing superior service. Much the same way, residents quickly become dedicated to one another and building community at Oakwood.

People Thrive Here



# OAKWOOD Outlook

*News from Oakwood Lutheran Senior Ministries*

## FEATURED ARTICLES



Why Hildy Said  
'Yes' to Oakwood  
11

---



Beyond  
Prescriptions  
14

---



Building on  
Excellence  
32

## *also in this issue:*

- 2 A Year of Soaring Service
- 4 An Active Step Forward
- 6 Q&A with Reg Hislop
- 18 Christ Lutheran Church
- 20 Horticulture Happenings
- 22 Board Member Profile:  
Lori Werbeckes
- 24 The Art of Social Distancing
- 26 Staff Profile: Dave Mossner
- 30 Enhancing Services:  
Oak Medical to Provide  
Medical Director Services
- 37 Shakespeare at Oakwood
- 38 Community Partner Spotlight

# A YEAR OF SOARING SERVICE

## *at The Rise*

**Created as part of the recent Prairie Ridge campus expansion,** The Rise allows Oakwood to offer one-bedroom assisted living apartments for the first time. Staff is proud to have recently marked the program's one-year anniversary of serving Madison-area seniors.

The Rise is comprised of three floors with just eleven apartments per floor. Each floor contains its own kitchen and dining area, living room, NuStep exercise machine and programming space, creating a comfortable "neighborhood" atmosphere on each floor. Residents on the second and third floor can relax on outdoor patios overlooking a landscaped courtyard.

"The Rise has been a wonderful addition to Oakwood," says Sandi Rodriguez, RN, BSN, Assisted Living Nurse Supervisor, who oversees The Rise. "It is like a beautiful hotel with the amenities offered; the dining area is spacious, residents can help themselves to coffee and the juice bar, and they always have access to snacks and fruit." With visitors permitted and

additional programs now being offered following nearly a year of COVID-related restrictions, residents are once again enjoying the engaging activities for which Oakwood is known.

"Life Enrichment staff has assisted in setting up bridge games, Friday happy hours and more," says Sandi.

A small number of apartments remain available on the first floor of The Rise, where residents can enjoy a secure courtyard and benefit from easy access to the bustling Prairie Ridge campus.

"We serve seniors who are transitioning from living independently to receiving 24/7 support," says Sandi. "Residents living here are happy, and families can rest easier knowing their loved ones are safe." 🌱

*Do you know someone who would benefit from life in The Rise? Learn more by contacting us at 608.230.4580.*



*“It is like a beautiful  
hotel with the  
amenities offered.”*

– SANDI RODRIGUEZ,  
RN, BSN



## LIFE ENRICHMENT

# An Active Step Forward

**With more than 96% of residents vaccinated,** Oakwood's campuses are carefully "opening back up," and Life Enrichment's plentiful offerings are once again being made available in ways they couldn't the previous year.

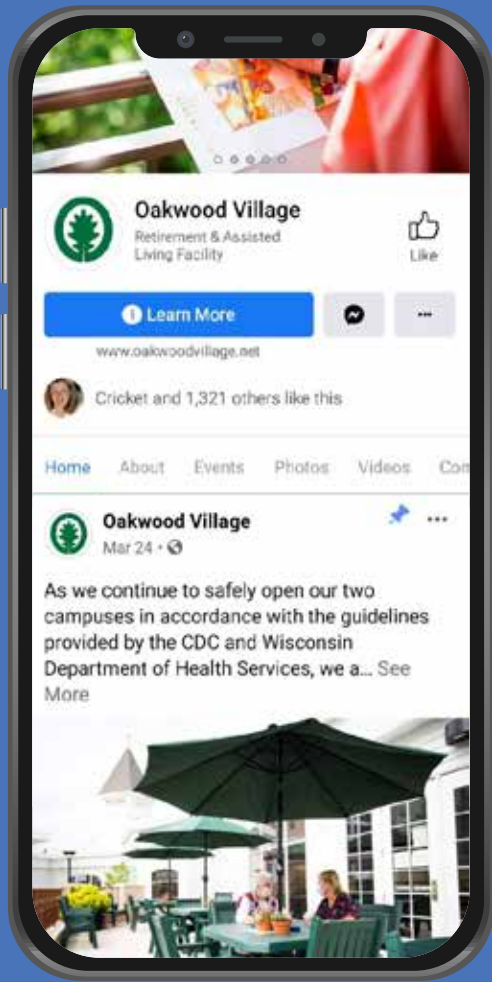
Warm weather always invites outdoor programming, and this year is no exception. Plans for resident opportunities include some familiar options, including: outdoor exercise classes, rickshaw rides, gardening, scenic bus rides, outdoor concerts and engaging with the beautiful natural surroundings on each campus.

In early spring, shopping trips on the Oakwood buses slowly resumed. Prairie Ridge Life Enrichment Supervisor Christa Iverson adds Prairie Ridge residents can also look forward to a number of walking groups and new artistic opportunities.

Both campus Life Enrichment teams plan to continue utilizing Oakwood's in-house television channel, Channel 900, to offer programming to residents in the comfort of their homes to meet the needs of those not quite ready to engage with small groups.

"We're looking forward to transitioning most of our exercise classes to an outdoor setting as soon as the weather and temperatures allow," says Alexandra Wagner, University Woods' Campus Physical Wellness Coordinator. Off-site program opportunities being planned include hiking, biking, swimming and kayak outings in the greater Madison area.

"We'll be socially distanced, wearing masks and outside as much as possible, but residents can count on energetic instructors and high-quality exercise programs for every ability level," says Alexandra. 🌱



## LET'S GET SOCIAL!



Be sure to follow Oakwood Village on Facebook to keep up with the latest from our communities.

Find us at  
[facebook.com/OakwoodVillageMadison](https://facebook.com/OakwoodVillageMadison)



## BOARDS OF DIRECTORS

### Oakwood Lutheran Senior Ministries, Inc.

Marje Murray, *Chair*  
 Peder Moren, *Vice Chair*  
 Tom Hanson, *Treasurer*  
 Calvin Williams, *Secretary*  
 Barbara Gessner, Eric Halverson (*Ex-Officio*), Tom Rivers,  
 Dan Stein, Clifford Strelow, Stan York

### Oakwood Village Prairie Ridge Apartments, Inc.

Marje Murray, *Chair*  
 Cliff Strelow, *Vice Chair*  
 Dan Stein, *Treasurer*  
 Calvin Williams, *Secretary*  
 Lois Schulz

### Oakwood Village Prairie Ridge Homes, Inc.

Marje Murray, *Chair*  
 Barbara Gessner, *Vice Chair*  
 David Bohlman, *Treasurer*  
 Martha Jo Church, *Secretary*  
 Tom Rivers

### Oakwood Village University Woods Apartments, Inc.

Marje Murray, *Chair*  
 Peder Moren, *Vice Chair*  
 Tom Hanson, *Treasurer*  
 Stan Inhorn

### Oakwood Village University Woods Homes, Inc.

Marje Murray, *Chair*  
 Calvin Williams, *Vice Chair*  
 Tom Hanson, *Treasurer*  
 Richard Rossmiller, *Secretary*  
 Stan York

### Oakwood Foundation, Inc.

Eric Halverson, *Chair*  
 Sarah Kruger, *Vice Chair*  
 Rod Nordby, *Treasurer*  
 Lori Werbeckes, *Secretary*  
 Mary Gulbrandsen, Phil Hardacre, Marje Murray (*Ex-Officio*),  
 Sue Ullsvik, Donna Ulteig, Karl Wellensiek, Ed Young

# Q&A WITH

# Reg Hislop, CEO

---

*We continue our conversation with Oakwood's CEO Reginald "Reg" Hislop, III, getting to know him personally and professionally and discussing priorities for Oakwood.*

**As you reflect upon 2020, what were a couple of key accomplishments you believe will benefit the organization in the upcoming years?**

All things being equal, we had a decent financial year producing a positive operating margin and an increase in cash and investments. In a pandemic, that's pretty remarkable.

I'm pleased we have great leadership talent in place at Prairie Ridge, and that the team is solid now and moving ahead.

I'm also pleased we were able to add some great talent and experience to the senior leadership team: Lisa Lowe, Jenn Maina, Kim Gochanour and Jeff Orr all arrived or joined in 2020. This group brings a very deep level of skill and expertise that should inure benefit to residents for years to come.

**Oakwood is designing a new skilled nursing building on the University Woods campus. This bucks the trend of many senior living providers not offering skilled nursing**

**or struggling to do so successfully. Why is this a priority?**

It's an unfortunate priority to be honest. The need is to replace Hebron, which is in terrible condition. Years of deferred maintenance have left the building in a condition so poor it can't be fixed.

We have the unenviable choice of having to either relocate Hebron residents or replace the building. Skilled nursing care is still a product or service that many, many folks need from time to time, including our own residents. Without Hebron, that level of care and service would no longer exist at University Woods.

There is a false belief that skilled nursing facilities aren't financially viable. Having run more than a few and invested in many, many more, I don't believe that is necessarily the case. Oakwood has the opportunity in a new environment — properly constructed and managed — to have a state-of-the-art facility that will attract the proper case-mix and reimbursement levels to provide financial viability.

A facility of the type we are planning will be a true "jewel" in Madison, Dane County and — frankly — throughout our region. Oakwood residents deserve it and so do older adults throughout the greater Madison community.





**Oakwood is in the process of opening the Oakwood Pharmacy at Prairie Ridge. Why do you believe it is important to have an on-site pharmacy on both campuses?**

The cleanest, clearest answer is care and service. Residents at Prairie Ridge will now have access to Oakwood Pharmacy staff on-site. Sure, we deliver medications today, but our services at Prairie Ridge are just that: delivery. With on-site pharmacists, residents will be able to have expanded access to highly-skilled providers that can and will do more than just fill prescriptions. The pharmacy staff will be available for questions, counseling, assistance with disease management, clinics for such things as vaccinations, education and more!

**Oakwood has recently restructured its leadership team and created a number of new leadership roles. Can you explain the strategy behind these roles and what they mean for Oakwood residents?**

When I arrived at Oakwood, I noticed that each campus was configured somewhat autonomously from the other. In so doing, there were a lot of duplicate roles in positions I would not typically expect to see in an organization the size of Oakwood and with its operations so geographically close. The net result is that efficiencies and consistency of care and service were very minimal. We weren't taking advantage of best practices in areas from hiring to labor distribution to food service to inventory and purchasing. Additionally, each campus was using different products. There are more examples but you get the gist.

What I have begun to do is centralize and streamline leadership for many key functions such as clinical policy and systems, food service, facility services and operations to specific folks with a very specific series of talents and experiences (years of education, training and successful history). This brings the best talent to the organization and allows for consistency to develop and economies to occur. We also improve

productivity and reduce overhead by eliminating layers of managers, directors and supervisors who really had partial jobs with little accountability.

For residents, this should create a much more efficient and effective level of services and care delivery with far more consistency across the organization.

We should (and in 2020 did) operate more efficiently, and with lower expense levels we drive more revenue for investment and security. This allows us to rely less on higher fees charged to residents.

### **You've talked about the need to strengthen Oakwood's financial standing. How do you feel about where Oakwood's finances stand at this time?**

Better, but we still have a way to go. We had an OK year and made some important systemic improvements that will (should) drive better operating results in 2021. We have more work to do. For Oakwood to be truly healthy, we need to produce earnings before interest, taxes, depreciation and amortization above 10%. This margin, also known as EBITDA, would then mean our cash revenues from operations are equal or exceed our cash expenses, including our mortgage or interest costs. We are not there yet, but we are on target for this to occur in 2021. If— and we will work hard to get there — we can exceed this level to say, 14 to 16%, we not only pay our mortgage costs but also can generate enough cash flow from operations to cover most if not all of our annual capital investment needs (repairs, equipment purchases, etc.). This level would place Oakwood in the top 10% of its peer group — where we want and need to be.

Financial performance impacts a number of different areas from credit terms to insurance costs to purchasing terms. The better Oakwood performs

financially, the more secure its future is and the more options it has for its future.

### **Much of the past year has been a balance between attempting to prevent risks associated with COVID-19 and maintaining a high quality of life for Oakwood residents. As more vaccines become available and positivity rates decline, what will be Oakwood's general approach to "opening back up"?**

Nothing has been more troubling for me this year than watching our residents and, to a certain extent, staff be so limited in human interactions. Safety has been a huge concern but there are times I do wonder at "what cost" to our own humanity.

Oakwood will go as quickly and smartly as we can and are allowed to by regulatory conditions. What this means is that we will do all we can to open and provide residents with guidance and safety protocols as efficiently as we are allowed to do. Remember, the general community will move more fluidly than our campuses, and this is because of the more stringent regulatory structure we are under.

### **Is there a meaningful exchange, conversation or moment you've had with an Oakwood resident, family member or employee that stands out to you that you would care to share?**

Wow...a bunch throughout the year. I've gotten literally hundreds of emails, letters, calls, etc. (both affirmative and critical), and I do try to respond to each one personally.

One that sticks out came via a call I received from a family member. Her mother was not doing well physically and visitation was not possible for her and, at the time with the amount of positive COVID cases in our community, for us. She had talked to her

mother the day before and felt OK about her care but she had some concerns.

When I returned her call, we talked for nearly an hour. We talked initially a bit about her mom and then mostly about “life.” She knew her mom was likely dying soon so she really wanted reassurance that we (Oakwood staff) would be there for her mom.

We talked about growing up in Wisconsin, being of a similar age, our history, where we each went to school, supper clubs, Packers, fishing and deer hunting. We talked about beer (when Wisconsin had a bunch of breweries), school field trips and our parents and families.

Just before we ended our call, she asked if I was a “spiritual person.” I told her I was, and she said I seemed like a pastor to her. I chuckled, and she told me she hadn’t been active in a church. She then asked if I would pray with her for her mom. I did, and she ended the call by saying, “Thank-you and God bless you, Pastor.” Her mom went out to the hospital later that night and passed away the next day.

That one sticks with me the most simply because I don’t usually get to have those kinds of conversations with folks in my daily work and, in this case, the woman needed to have that conversation. I was glad I was there for her and ultimately, by extension, her mother.

### **What’s your favorite warm weather activity?**

So many, honestly! With warm weather a short-timer in Wisconsin, I relish a bunch of stuff. I love to fly fish and golf. Probably my favorite is best described as “anything with Diane.” We have a Mustang convertible, which is perfect for jaunts to local hangouts like the Farmer’s Market, shopping or a quick bite somewhere. At home, sitting outside for dinner or a glass of wine and just

soaking in a beautiful summer day followed by a clear night sky, tons of stars and a little good jazz music in the background is about as perfect to me as it gets.

### **What have you personally missed throughout COVID that you most look forward to when restrictions are loosened?**

We are known to throw a couple of good barbecues during the nice weather months. We’ll usually have a crew of 30 or more friends and family for food, fellowship, etc. I can’t wait to resume those events! Also, the 4th of July fireworks in Galena, Illinois are awesome. It’s a small town where thousands of locals and visitors line the Galena River banks to watch a pretty decent fireworks show. It is true heartland America!

### **What is the greatest, or a few of the greatest, bands of all-time?**

Trying to stump me with this one....

I’ll take “a few.” The Rolling Stones for rock and roll, and maybe the Beach Boys, too (great cruisin’ music in the Mustang). The Boston Pops Orchestra just because they are great. Glenn Miller, Count Basie Orchestra, and the Jazz at Lincoln Center Orchestra are all-time favorites of mine.

### **Do you have a favorite place to shop? Where could you spend all day browsing or spending a gift card with ease?**

Hands down, a real, true-to-life, old fashioned hardware store — not a big box store like Home Depot. The kind of hardware store that has just about everything from nuts to bolts, to rope and nails, tools and even candy! I can’t go in one and come out empty-handed. 🌱



# Five-Star Care You Can Count On



Did you know both of Oakwood's skilled nursing programs are rated 5-star by Medicare?

Medicare's 5-star rating system is intended to help prospective residents and families compare the quality of skilled nursing providers. Programs are rated based upon the results of health inspections, staffing levels and quality of care measures.

Seven of 24 Madison-area nursing homes are currently 5-star providers, with Hebron Oaks and the Health and Rehabilitation Center making up two of the seven.

When you choose Oakwood for care and rehabilitation, know you are choosing the very best!

Go to [medicare.gov/care-compare](https://www.medicare.gov/care-compare) to learn more.

Do you want to have your own 5-star rehab experience? Contact **608.230.4620** or [referrals@oakwoodvillage.net](mailto:referrals@oakwoodvillage.net) to let us know if you have an upcoming need for short-term rehabilitation following elective surgery.

## RESIDENT PROFILE

# Why Hildy Said 'Yes' to Oakwood

**Hildy McGown** was a little out of breath the day of this interview after her 30-minute cardio workout led by Oakwood Village University Woods fitness staff.

"Those classes are great," she says. "That's one of the things I love about Oakwood — they invest in the well-being of residents."

Hildy always knew she'd move to the University Woods campus when she was ready to leave her home. Both her mother and father-in-law had been residents.

"My mother lived here for 13 happy years," says Hildy. "When she was in her 90's she still played piano for sing-alongs. We used to kid her that she played for 'the old people' because she was one of the oldest here!"

Born in South Dakota, Hildy was no stranger to Madison. Her father, a Lutheran minister, was a Wisconsin native who often brought his young family back to visit the area and enjoy summertime activities like swimming in Lake Mendota.

*"With all the activities you can participate in, it's a haven here. There are so many nice people with interesting lives."*

– HILDY MCGOWN



Hildy followed in her mother's footsteps, becoming an elementary teacher. Her first job after graduating from Luther College was in Madison. Here she met her husband Wayne and together they raised a daughter and two sons in the home they built just two blocks from Oakwood. When their youngest child entered school, Hildy began working with the Benedictine Sisters at Saint Benedict Center, now known as Holy Wisdom Monastery. She served as director of the conference center until her retirement in 1995. Wayne had a distinguished career in Wisconsin state government and UW administration, retiring in 2000 as the first director of the University Research Park, Oakwood's neighbor to the east.

"Even though I lost my husband 12 years ago and had my name on the list at Oakwood, I was content to stay in my home. But in 2019, my life changed in a fortuitous way. I became aware of a woman and her son (members of my church) who were homeless.

Before I knew it, I asked them to come live at my house. They were my guests for six months! When they moved out their life was moving along a good path, but suddenly my house felt too lonely." Then COVID struck, compounding Hildy's "aloneness."

At about that time, Hildy got a call from Oakwood, and was thrilled to say "yes" to her one-bedroom apartment with a screened porch. "Thanks to my wonderful kids the house sale and moving went well." She was impressed with how beautifully the staff refurbished her cozy home and she found her new neighbors to be helpful and friendly from day one. She is relieved to have the upkeep of a big house behind her and is amazed over and over again at all the amenities that come with living at 6205 Mineral Point Road. "I can't imagine what it will be like when all the in-person activities can resume post-COVID. I am grateful to live in a place where the staff bends over backward to keep residents safe and happy." 🌿

▼ (Left) Hildy returns the snowshoeing equipment she borrowed from the fitness center. (Right) Hildy participates in daily exercise classes on Oakwood's in-house television channel.





*“That’s one of the things I love about Oakwood; they invest in the well-being of residents.”*

– HILDY MCGOWN

# Beyond Prescriptions

## Q&A WITH ANGELA STUDNICKA, PHARMD, DIRECTOR OF OAKWOOD PHARMACY

---

*With the opening of Oakwood Pharmacy's new location on the Prairie Ridge campus, we asked Angela Studnicka, Director of the Oakwood Pharmacy, to answer a few questions.*

### Why is Oakwood bringing a pharmacy to Prairie Ridge?

In the 30+ years the Oakwood Pharmacy has existed, the focus of the pharmacy team has been to provide quality pharmacy services and support safe and effective medication use. Establishing a physical presence on the Prairie Ridge campus ensures the Oakwood Pharmacy is able to fulfill this goal for the Prairie Ridge community.

### How many apartment home residents are getting pharmacy services now?

The Oakwood Pharmacy currently services approximately 250-300 independent living residents between the two campuses.

### What are the key benefits of using the Oakwood Pharmacy for Oakwood residents?

- Extensive experience: Our pharmacist team comes from a variety of backgrounds serving older adults with combined years of experience exceeding 100 years! They've worked as technicians, served as pharmacy school faculty, overseen clinical services such as immunizations, served as consultant

pharmacists for assisted living and skilled nursing facilities, and some even carry the credentials of a Board Certified Geriatric Pharmacist (BCGP).

- Integration with the Oakwood Village care team: Oakwood Pharmacy provides pharmacy services for residents in our assisted living, memory care and skilled nursing facilities. When residents transition to a new level of care at Oakwood, having a pharmacy familiar with your prescription history makes a difference. Medication reconciliation at each of these transitions of care ensures an accurate and complete medication history.
- Advocacy: The Oakwood Pharmacy team includes a billing specialist with extensive experience in prescription billing and coordination of benefits. Having this resource means the pharmacy team advocates for you when prescription formularies change, prior authorizations are required, or alternative medication options are needed due to side effects, allergies or other factors.

### What are the strengths of the Oakwood Pharmacy?

- Accessibility: The Oakwood Pharmacy has a pharmacist on-call 24/7, 365 days a year — this includes after-hours, weekends and holidays. You don't have to wait for your medication to arrive in the mail or make a trip on your way home from





## What are the most popular services the Oakwood Pharmacy provides to its customers?

Free delivery directly to your door by pharmacy staff

---

Auto-Fill, an optional service residents can utilize to have their routine, chronic medications filled and delivered automatically each month

---

On-site vaccine clinics, typically in the fall for the annual influenza vaccine, but most recently for COVID-19 vaccines

---

Adherence options, including weekly med boxes organized by time of day with a color-coded med list showing how many medications are taken at each time and what each looks like



urgent care; our team brings your medication to you. During scheduled hours, you can reach us and talk to our staff without long hold times or having to leave a message. And, with our campuses beginning to return to “normal” post-COVID, you’ll be able to stop by the pharmacy to ask questions, pick up over-the-counter items or devices, or just discuss the latest Brewers game.

- Familiarity: The Oakwood Pharmacy team takes pride in getting to know our customers like family by learning about your background and life experiences. We are a small team of less than 20 so you get to know our names, voices and faces. We are dedicated to taking care of your prescription needs and are excited to welcome new and current residents to the Oakwood Pharmacy family.

### How cost-competitive is Oakwood Pharmacy compared to Walgreens, Walmart, CVS, etc., for prescriptions and over-the-counter?

In general, while we may not stock bulk quantities of over-the-counter items, the Oakwood Pharmacy is extremely cost-competitive. There are outliers, but these are typically due to the limited storage space of Oakwood Pharmacy; we can’t purchase large cases of items to get the best pricing.

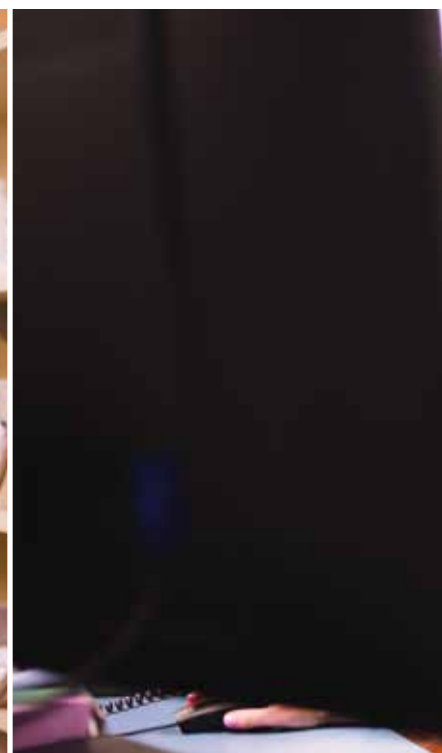
As it relates to prescription items, Oakwood Pharmacy accepts ALL Part D plans in Wisconsin, and out-of-pocket costs (i.e., copays) are determined by your individual plan. Some of these plans may offer reduced fees for 90-day supplies or use of preferred mail-order pharmacy. We recognize cost is a factor in selecting a pharmacy; however, the convenience of direct-to-door delivery, pharmacists with older adult-focused knowledge and education, and a relationship with accessible pharmacy team members may help justify these costs.

### What is the process to switch pharmacies? Would you consider it easy?

The process of switching pharmacies is easy, and the Oakwood Pharmacy staff takes care of all the legwork from start to finish.

### Can you describe the process and how quickly a person can get their prescriptions transferred over to Oakwood Pharmacy from places like Walgreens or CVS?

If interested in switching pharmacies, simply complete an Oakwood Pharmacy Medication Transfer Form. We ask for basic background information, your medical and prescription history, and current



pharmacy. The Oakwood Pharmacy staff will review the form and reach out if they have questions; otherwise, we will contact your current pharmacy to request prescription transfers. This process in general takes 48–72 hours, but if there are emergent needs the Oakwood Pharmacy can have transfers completed the same day.

### Do residents need to get a new prescription if they switch pharmacies?

No. In most cases, the Oakwood Pharmacy will be able to transfer any existing prescriptions from your current pharmacy and begin filling those medications by the time you need them. If a new prescription were required for any reason, the Oakwood Pharmacy will contact the health care provider who authorized the prescription to request a new prescription.

### What do you think is most exciting about the new pharmacy?

The ability to “meet” new and “old” customers! The pharmacy team is excited to see residents and staff in person and become a fixture of the Prairie Ridge community. 🌱



## COVID-19 VACCINATION UPDATE

More than

# 96%

of Independent Living  
residents on the  
Oakwood Village  
campuses have received  
their vaccines!



# Christ Lutheran Church

---

**“It’s like a big family** — these people really love being together,” says Pastor Sue Beadle of Christ Lutheran Church in DeForest.

The parish itself predates Wisconsin’s statehood, with its 175th anniversary celebration already being planned for 2022. The Norwegian roots of the church have woven their way through the church’s history and are present in parish life today.

As one would assume, 2020 brought unexpected challenges and opportunities for Christ Lutheran Church. After the church initially shut down, Pastor Sue made services available virtually. Knowing not just the service but also the space of the church itself were so important to parishioners, Pastor Sue recorded services in the sanctuary and shared them online, saying: “A lot of pastors were recording sermons from home and sharing those. I knew what this sanctuary space means to people here, so we decided we needed to record services there.”

Another way Pastor Sue found to connect with parishioners was specifically aimed at the children of the parish. Having a lot of children’s books from when her kids were young, she decided to record herself reading a storybook each night. “I didn’t realize COVID would be going on for as long as it has, so I had to invest in more books!” she says.

With the sanctuary closed down, Pastor Sue saw an opportunity to have some much-needed maintenance done to the space. Knowing how sacred the sanctuary

itself is to the parish, she invited the congregation to help move items out of the space for it to be painted. “We wanted to have closure with the old space,” she says. “I told them, ‘When you walk in, it is going to look different; it’s going to be beautiful, but different.’ So we grieved the old space and celebrated the new.”

Christ Lutheran is well-known for its annual Lutefisk Dinner, held the second Saturday in November. “People from five states around us come to eat at our Lutefisk Dinner,” shares Pastor Sue. Needless to say, it’s a big deal. At the last Lutefisk Dinner in 2019 (due to the pandemic, the annual dinner was canceled in 2020), they served a ton of lutefisk. “Literally. A ton of fish,” she says, noting the 1,200 people served.

The Lutefisk Dinner makes for a labor-intensive weekend. In addition to the fish, they served 500 pounds of rutabagas, 500 pounds of meatballs and went through 30 cases of butter. It’s all made possible by the efforts of the congregation coming together. “It’s a labor of love,” Pastor Sue says.

Prairie Ridge resident Carol Uglow has been a member of Christ Lutheran Church for more than 25 years, and continues to be active in the church. She’s part of the book club, Bible study and Altar Guild, and she helps plan the Lutefisk Dinner. Echoing Pastor Sue’s description of the church, Carol says, “I love the friendliness of the congregation.” 🌿



# AT A GLANCE

Year established 1847

Pastor Sue Beadle

Website [christlutherandeforest.org](http://christlutherandeforest.org)

Phone 608.846.4718

Address

220 S. Main Street, DeForest, WI 53532

Service times

Summer Hours: Sundays at 8:00am  
and 9:30am

*(Service times are subject to change)*

Number of members 1,250




*“When you walk in, it is  
going to look different;  
it’s going to be beautiful,  
but different.”*

– PASTOR SUE BEADLE

*Christ Lutheran Church*





# HORTICULTURE HAPPENINGS

## *A Palette in Bloom*

**With warmer weather upon us** and the enjoyment of the beautiful colors of Wisconsin flora in full bloom just around the corner, there's a lot to look forward to outdoors at Oakwood.

Well before the ground thawed, Oakwood's Landscape and Horticulture Supervisor Savannah Conratt was working on plans for the grounds on both campuses.

"Horticulture Assistant Emily O'Bryan and I start thinking about color themes the summer prior," says Savannah. "Because we send our annual order to Oakwood's grower in September, we are always planning ahead."

The 2021 grounds theme is inspired by the beautiful monarch butterfly. "We decided to incorporate a color theme on both campuses that is dark and light orange, black and dark burgundy, and white, pink and purple to bring to mind a monarch butterfly in a field of purple coneflowers," she explains.

Savannah also plans to register the University Woods campus as a Monarch Waystation this year, matching the registration already in place on the Prairie Ridge campus.

Residents and guests can expect to see the colorful displays at the entrances, near campus signage and in courtyards throughout both Oakwood campuses. 🌱

---

◀ *Landscape and Horticulture Supervisor Savannah Conratt planned plantings with a monarch color theme.*

---

## BOARD MEMBER PROFILE

# Lori Werbeckes

**When Lori Werbeckes started** her first job out of college at Oakwood in 1983, she never dreamed she would still be connected to Oakwood more than 30 years later.

Lori has served on the Oakwood Foundation Board since 2016. She brought with her so much historical knowledge of the organization, and the Foundation specifically, that there was no need for a new board member orientation.

The marketing assistant role she accepted in 1983 led to another role at Oakwood, and another, and another, until she left Oakwood in 2011 as the associate director of development.

“I had seven different titles,” Lori says. “I switched over to the Foundation in 1990, and that’s where I stayed because it intrigued me. It was a new way for me to build relationships with members of the Oakwood family as I was involved in volunteer coordination and fund development. During that time, there was a lot of growth at Oakwood, physically, and also in the number of staff, donations and donors. It was exciting to be part of that. It was an incredible opportunity to be part of an organization that was growing so much.”

Ready for the next step in her career, Lori joined Marquardt Village, a retirement community in Watertown, where she embraced the opportunity to begin and grow its foundation. She later joined the Wisconsin Council of the Blind and Visually Impaired, where she serves today as its Fund Development Director. A highlight of her work is hearing stories of

why donors give to the organization and their delight when they learn of the lives they changed with their philanthropy.

Lori grew up on dairy farm in Chilton, Wisconsin, and studied business administration at UW–Platteville before that fateful first job with Oakwood when she was just 22 years old. These days, Lori and husband Mark live in Mount Horeb and enjoy spending time with their adult children. Lori and Mark also value the time they spend with their moms.

“Our kids grew up with Oakwood,” she says. “The oldest had a job here, and the younger two were volunteers. Because of that experience, they’ve never had a second thought about spending time with older individuals or visiting with someone who uses a wheelchair.”

In her spare time, Lori enjoys gardening, biking and visiting family throughout the U.S. She and Mark are also involved with Young Life of Mount Horeb, a Christian organization that works with middle-school to college-aged youth.

Lori says coming back to Oakwood to serve on the Foundation board feels like continuing something she played a part in growing.

“The Foundation continued to thrive while I was gone, and that feels good,” she says. “Oakwood as a whole was growing when I left, and it has become an industry leader since then. Oakwood staff are allowed to grow as leaders who share ideas with



*“There are so many opportunities at Oakwood to see beauty, to experience art, to hear music. There’s an opportunity to grow here.”*

– LORI WERBECKES

others in the field of long-term care in order to make the whole industry better. We have the ability and a responsibility to do that.”

Lori notes the variety of activities and amenities available to residents, some of which are made possible through the generosity of Oakwood Foundation donors.

“Oakwood provides interesting life enrichment opportunities that keep people engaged,” she says. “As you age, your world shrinks, but being here makes it easy for a person to not have that happen. There are so many opportunities at Oakwood to see beauty, to experience art, to hear music. There’s an opportunity to grow here.”

Having spent a significant part of her career at Oakwood, Lori says it was easy to re-engage with the organization and once again refer to it as “we” and “us.”

“By being on the board, I’m continuing my relationship with Oakwood, and it’s so fulfilling to do that after being gone,” says Lori. “I’m very happy to be back.” 🌱



# THE ART OF SOCIAL DISTANCING

The Prairie Ridge Life Enrichment department asked residents to submit a form of art they created during the COVID-19 pandemic time of March 2020 to present day. From this, an exhibit called “The Art of Social Distancing” was born. Talented residents of the campus submitted works ranging from paintings and sculpture to written word and fiber creations. The goal was to showcase the resiliency and creativity of residents despite having to alter their lives during quarantine and remain socially distanced. 🌱





## STAFF PROFILE

# David Mossner

---

**Part of Oakwood Foundation Director of Development** David Mossner's role is all about connecting donors with opportunities to make life at Oakwood Village even more enjoyable for residents.

As Dave puts it, donor gifts provide the "margin of excellence" that makes Oakwood...Oakwood.

"We have two very nice campuses, but donor gifts from people on campus and people in the community, really are important," Dave explains. "They make an impact by funding much of what makes Oakwood great. New programs, fitness centers, computer labs, new sound systems in our chapels...donors make those things happen. They even supported the addition of rickshaw bicycles to both campuses. I've given rickshaw rides to people, and I can see firsthand the joy they get from them."

David is a Janesville native who became fascinated by radio as a kid. A sports fan who couldn't get enough of the Milwaukee Bucks, he was taken by sports play-by-play and decided to go into radio. A part-time job at a local Janesville radio station while he was in high school sealed the deal. While attending Drake University in Des Moines, Iowa, he gained even more experience working at a radio station and in a TV news reporter job to boot.

"I worked in either radio broadcasting or television news during my time at Drake, and I spent a semester internship covering the Iowa Legislature for a local TV station," says Dave.

It was there that he met his wife Rhonda. Dave continued his early career as a legislative and agriculture reporter, returning to Wisconsin to work for Madison's WISC-TV in its Rock County bureau.

Dave and Rhonda raised their two boys as he transitioned from TV news to insurance with Thrivent Financial for Lutherans and into fundraising roles for the North Wisconsin District of the Lutheran Church—Missouri Synod and Lutheran High School of Indianapolis.

"We wanted to come back to Wisconsin, so in 2012 I joined Oakwood," he says. "The people of Oakwood are what make it great. That includes residents, staff and family members... a big universe of people! Residents are happy to be here, and the staff is so friendly. I joke that we only hire cheerful people. They feel good about Oakwood and our mission."

If you ask Dave what he does in his spare time, be prepared for an impressive list of volunteer service and creative pursuits.

He volunteers at his church, Cross Lutheran of Middleton, and shares his professional time and talent with the local chapter of the Association of Fundraising Professionals and the Wisconsin Association of Charitable Gift Planners.

Taking a page from the early days of his career, Dave knows how to share a story whether through spoken words, written words or no words at all.



*“A great joy of this position is learning each donor’s Oakwood Village story and why this place is so important to them. It was a blessing for me to return to Wisconsin and become part of the Oakwood team.”*

– DAVID MOSSNER  
Director of Development

His early interest in radio was reignited in a way that manifested in voice acting, which includes doing voiceovers for commercials and other projects.

Dave's interest in photography led to a hobby photographing lighthouses and covered bridges. He even paired his love of photography with his enjoyment of cycling.

"In 2018, they had Bucky Badger statues located around Madison as part of a 'Bucky on Parade' project," says Dave. "I biked to all 85 statues from our home in Verona to photograph them. In the midst of that, I realized many Oakwood residents would never see all of these Bucky's, so I talked with Life Enrichment and put together a presentation for residents. The talk seemed to be well-received, so I started going out into the community to local libraries and senior centers to talk about biking to Bucky."

Dave also maintains a blog, which he began in 2012, as a place to write about his interests. Anyone who blogs knows consistency is key. Dave posts four days a week, sharing content about interests such as photography, sports, writing and family life.

David's joy of life extends to his work. He says the greatest thing about his job is talking with residents about their lives and the projects they are excited about supporting. Dave notes working with friends and colleagues Heidi Lauhon and Keith VanLanduyt keeps their efforts to thank and inform donors fun and interesting.

"A great joy of this position is learning each donor's Oakwood Village story and why this place is so important to them," says Dave. "It was a blessing for me to return to Wisconsin and become part of the Oakwood team." 🍷



*Photos from top left "Manistee N Pierhead," "Ringo," "And On Wisconsin," and previous page "Big Sable" by Dave Mossner.* ►



# ENHANCING SERVICES

## Oak Medical to Provide Medical Director Services

### Oakwood has contracted with Oak Medical

to serve as the licensed medical director provider on both campuses.

Oak Medical is based out of Waukesha, Wisconsin, and is an organization of internal medicine physicians and advanced practice providers who focus their medical services on caring for residents in skilled nursing facilities and senior living communities throughout Wisconsin.

Dr. Sarfraz Sidhu from Oak Medical is Oakwood's new Medical Director overseeing the Prairie Ridge and University Woods campuses. He will be supported at Oakwood by Dr. Maria Cruz-Apolinario and Physician Assistant Paige Smithback. As Medical Director Dr. Sidhu will focus on policies, regulatory compliance and staff support, while Dr. Cruz-Apolinario and Smithback will see patients on Oakwood's two campuses.

### What is a Medical Director?

The traditional role of a medical director is to provide guidance and leadership regarding the use of medicine in health care organizations, and to help

create and oversee policies and processes related to clinical services. Skilled nursing programs are required to have a medical director on staff, and many facilities contract with local hospitals offering the services of a physician for a defined number of hours per month. Medical directors may also be asked to temporarily serve as primary care physicians if patients are admitted who do not have a local physician.

Unfortunately, few primary care physicians have the time or ability to get out of their offices frequently to visit skilled nursing facilities, whether it's to see patients, provide training or support to clinical staff.

### Why Oak Medical?

Oak Medical is unique in that they *specialize* in working with skilled nursing facilities, assisted living, memory care and senior living communities. Oak Medical staff has a strong understanding of skilled nursing regulations, staffing levels, and quality measures, and a team of staff dedicated to providing clinical support.

As a result of this relationship, Oakwood's clinical staff will have ready access to an SNFist, or a medical professional who specializes in working in the



skilled nursing setting frequently on-site. Benefits to Oakwood staff include consistent medical oversight, assistance in the creation of clinical policies and procedures, and 24-hour access to a physician, if needed.

Because work in the skilled nursing and long term care setting is their primary focus, an Oak Medical physician and physician assistant will have a regular presence on the Oakwood campuses. This allows for close supervision of patients' health conditions, early interventions and strong communication between residents, their families and clinical staff.

When it comes to seeing patients in the skilled nursing setting, the physician team at Oak Medical is not intended to replace the patients' primary care physician but to support the recovery of short-term rehab patients at Oakwood and prevent re-hospitalization. Oak Medical clinical staff will provide regular communication and updates to patients' primary physician, and then return patients to their care upon discharge. These services offer an extra layer of supervision and support for Oakwood patients and are typically covered under the cost of the patients' stay, whether it's Medicare, Medicaid or private insurance.

While this relationship will initially benefit the patients and staff of Oakwood's two skilled nursing programs, all Oakwood residents will soon have the opportunity to take advantage of a number of enhanced service options and support. Unlike other medical directors who focus primarily on residents

in skilled nursing, Oak Medical will support residents and employees throughout all levels of care at Oakwood.

The availability of expanded onsite services for all Oakwood residents will include wound management, psychiatric care, and primary physician services for acute and chronic needs. Residents in the apartment homes, assisted living and memory care have the opportunity to transition to Oak Medical for their primary care physician if having a physician that can accommodate appointments on campus on a regular basis appeals to them. Again, the frequent availability of a physician or physician assistant on the Oakwood campus is a key benefit. For many, having a physician come their apartment home or assisted living suite for appointments will be a welcome option.

We look forward to offering opportunities throughout the summer to learn more about the services provided by Oak Medical. In the meantime, if you are interested in learning more about available services, you may visit [www.oakmedgroup.com](http://www.oakmedgroup.com) or talk with your campus social worker. 🌱

---

*Dr. Sarfraz Sidhu (left) from Oak Medical is Oakwood's new Medical Director and will oversee physician services on the Prairie Ridge and University Woods campuses. Dr. Maria Cruz-Apolinario (not pictured) and Physician Assistant Paige Smithback (right) will have a regular presence and are available to see patients on the Oakwood campuses.* ►



# BUILDING ON EXCELLENCE

## *University Woods Skilled Nursing Plans Move Forward*

**Oakwood continues to make progress** towards the creation of a new skilled nursing building on its University Woods campus, with construction tentatively scheduled for late summer or early fall, pending final City approval.

This project, which will take the place of the aging Hebron Oaks building, offers a number of benefits to the residents of Oakwood Village University Woods and further establish Oakwood as the provider of choice for those in the community seeking short-term rehabilitation services.

The need for a new skilled nursing and rehabilitation center is being driven by the age of Hebron Oaks. While the facility is rated a 5-star provider of care by Medicare.gov, the building was constructed in

the 1960s, with wings added on in the 70s and 80s. A new building will complement the outstanding care provided by Oakwood and will create a modern, attractive environment for those receiving and providing care.

The new building will be located on the southwest side of the University Woods campus, and will be constructed on land acquired by Oakwood within the past five years specifically for the purpose of campus redevelopment. The project will be up to four stories high and will connect to campus indoors through the first floor of Covenant Oaks, where Oakwood's finance offices are currently located.

Plans call for a number of enhancements to the rehabilitation experience at Oakwood. Resident suites



will be all private and nearly double the size of current Hebron Oaks suites, averaging approximately 465 square feet. Suites will consist of spacious bathrooms, a dedicated bedroom, as well as a living area, in order to better accommodate resident family and guests. Large windows will showcase trees and water-retention ponds and should enhance the healing process for those recovering from surgery or a health incident. Green roofs, common outdoor patio areas and beautiful landscaping will add to the aesthetics.

The first floor of the building will feature a spacious physical, occupational and speech therapy gym, which will lead to an outdoor courtyard. When the weather accommodates, use of the outdoor courtyard will be a component of therapy programming. First-floor

---

▲ *The proposed new skilled nursing and rehabilitation center will be located on the southwest corner of University Woods and will connect to the campus at the first floor of Covenant Oaks (below-surface connection not shown).*



plans also call for a meditation room that will offer patients and their families an opportunity for peace and tranquility, a spa, and a bistro and dining area for skilled nursing residents and campus employees.

While the large resident suites, modern therapy gym and additional amenities will make for a first-class rehabilitation setting, the new building will also help Oakwood address important service gaps on the University Woods campus.

A number of suites will be designed to serve the bariatric population and will be even larger than the standard suites in order to accommodate lifts and other equipment.

Oakwood is also planning on creating a palliative care wing and will offer dedicated programming and care to ensure Oakwood residents and other members of the community receive appropriate and compassionate support at the end of life.

Once the new building opens, Hebron Oaks will be taken down with the exception of the Resurrection Chapel, which will remain along with its connection to Heritage Oaks. The Oakwood Pharmacy will be relocated to the new connection on the first floor of Covenant Oaks and a new central kitchen will be included on the lower level of the new project. While these spaces may be considered “behind the scenes”



◀ *The proposed project will feature large windows with views of trees and beautiful landscaping, all intended to create a healing, attractive environment for those receiving care.*

for most residents and families, including both in this project allows University Woods to address significant space limitations and logistical challenges the current location presents to both functions.

Design of the project continues to progress, and is being coordinated by Oakwood's Senior Director of Facility Services Dave Bertsch. Eppstein Uhen Architects (EUA) is leading the building design, and Vogel Bros. Building Co. is the general contractor for the project.

The design team heads to Madison's Urban Design Commission in May for approval, and then for approval from the City of Madison this summer

to begin work. The new skilled nursing and rehabilitation center is scheduled to open in late 2022.

Construction of this project will allow the organization to address a significant campus need and, paired with the Prairie Ridge Health and Rehabilitation Center which opened in 2008, position Oakwood to be a Madison leader in short-term rehabilitation services. We'll continue to provide updates as construction moves ahead on this important project.

*Please note: this project is still in the design phase and these images are subject to change. Rendering provided by Eppstein Uhen Architects. 🌱*



*Photos by Peter McCullough*

# MAKE YOUR MOVE!

What's the best way to experience everything Oakwood has to offer? Move in!

Prairie Ridge has immediate availability in independent living apartment homes.

Enjoy an active lifestyle with friends nearby and explore common interests as a valued member of a thriving community.

Our life lease apartment homes provide a beautiful, spacious sanctuary for you to call your own. The amenity-rich Prairie Ridge campus and world-class life enrichment programming invite you to continue learning and exploring the world around you.

*Call 608.230.4580 to learn more.*

# SHAKESPEARE AT OAKWOOD

*Beyond the Page*

This spring, Jennifer Bethel, University Woods Art Therapist, began a new program called *Shakespeare: Beyond the Page*.

“This program is sure to take us to new levels of fun and collaboration; it gives us a sounding board for our own life experiences,” shares Jennifer.

The program looks at language, themes, characters, plays and Shakespeare in our contemporary world. Participants will read, share, create, improve and work on character development as they examine what Shakespeare has to say about our own life and times.

An American Player Theatre’s workshop will be scheduled at a later date.

In addition, a Shakespeare film matinee will be shown on the third Sunday of the month for the rest of the year. 🍷



*“This program is sure to take us to new levels of fun and collaboration; it gives us a sounding board for our own life experiences.”*

– JENNIFER BETHEL



# 2021 COMMUNITY PARTNERS

The Oakwood Foundation would like to thank the following business partners who have made the choice to support our organization in 2021. Their support demonstrates their commitment to serving Oakwood and provides the Oakwood Foundation with additional resources to enhance programs and services for our community.

## Gold Partner

Giving at the \$10,000 Level



better people = better builders®

## Silver Partner

Giving at the \$5,000 Level



## Community Partner

Giving at the \$1,500 Level

Alliant Energy

Boelter

Coyle Carpet One

Cress Funeral & Cremation Service

CTW Abbey Carpet & Floor

CUNA Mutual

Econoprint

Eppstein Uhen Architects

M3 Insurance

Madison United Healthcare Linen, Ltd.

Monona Plumbing and  
Fire Protection, Inc.

North American Mechanical, Inc.

Oimoen Electric, Inc.

Parasol Alliance

Quartz Health Solutions, Inc.

VRI

If you know individuals associated with these organizations, *please thank them* for choosing to support Oakwood as a 2021 Community Partner!



# The Oak Legacy Circle Grows

---

In 2020, the Oakwood Foundation team presented friends of Oakwood with an ambitious challenge: to grow our Oak Legacy Circle with the addition of 20 new legacy gift commitments.

Friends of Oakwood just like you responded in unprecedented fashion, helping us receive *18 new legacy gift commitments!* To put this remarkable display of generosity in context, most years the Foundation receives an average of three new Oak Legacy Circle commitments. Thank you for your amazing response!

By joining the Oak Legacy Circle you help to ensure Oakwood can continue to improve services, training and amenities on our two campuses well into the future.

If you are interested in joining the Oak Legacy Circle, you are invited to do so at any time. Contact David Mossner at **608.230.4441** or via email at [david.mossner@oakwoodvillage.net](mailto:david.mossner@oakwoodvillage.net) to discuss how you can make a difference at Oakwood with a legacy gift.

# Donors Help Provide Needed Care

---

Your support of the Oakwood Foundation's Continuing Care Endowment Fund helps Oakwood provide for those who have outlived their resources.

**In 2020, the Oakwood Foundation contributed \$600,000 to help offset losses incurred by Oakwood providing needed care.**

This represents a 9% increase in support from 2019 and approximately 25% of charitable care provided in 2020, which totaled \$2.6 million.

Thank you for your gifts. With your continued support, we can continue growing this fund and providing Oakwood care for those who most need our help.

To make a gift in support of the Continuing Care Endowment Fund, please contact David Mossner at **608.230.4441** or via email at **[david.mossner@oakwoodvillage.net](mailto:david.mossner@oakwoodvillage.net)**



# Oakwood Foundation Recognition Societies

---

Oakwood has a number of giving societies intended to honor and recognize donors. We invite you to contact us to learn more about how your membership in a society right for you will help the people of Oakwood.

## ANNUAL GIVING SOCIETIES

### Golden Oak Society

Recognizes supporters who give \$5,000 or greater to the Oakwood Foundation annually.

### Oak Society

Recognizes supporters who give \$1,000 to \$4,999 to the Oakwood Foundation annually.

## LIFETIME GIVING SOCIETIES

### President's Circle

Recognizes supporters who have given \$100,000 or greater in their lifetime to the Oakwood Foundation.

### Lifetime Golden Oak Society

Recognizes supporters who have given \$50,000 to \$99,999 in their lifetime to the Oakwood Foundation.

## ADDITIONAL GIVING SOCIETIES & RECOGNITION OPPORTUNITIES

### Oak Tree Circle

Recognizes supporters who give to the Oakwood Foundation monthly at any level via automatic payment. This can be done via automatic checking withdrawal or credit card.

### Oak Legacy Circle

Recognizes supporters who have named the Oakwood Foundation in their will or estate, or have established a Charitable Gift Annuity with the Oakwood Foundation.

### Memorial Plaque

A loved one may be memorialized on Oakwood's Donor Recognition Wall with a gift of \$1,000 or greater.

Support for the Oakwood Foundation comes in many different forms. **No matter how you choose to give to Oakwood, or the amount of your gift, know that you are a valued donor and your generosity is appreciated.**



# 2020 New Donor Society Members

## OAKWOOD FOUNDATION

---

Your gifts improve the lives of Oakwood residents.

**We thank the following individuals who joined an Oakwood Foundation donor society for the first time in 2020.**

---

### OAK TREE CIRCLE MEMBERS

*Thank you to the Oak Tree Circle, which is made up of donors who give an automatic monthly gift via credit card, ACH or paycheck.*

Monique Banas	Larry D. Klatt, II	Lindsey Ripp	Donna Todd
Susan Berg	Crystal Kurtz	Richard Rowell	Marie Van Beek
Ross Brown	Lynn Lampman	Nicole Schaefer	Alex Wagner
Sherry Faley	James Lien	Karen Schroeder	Sarah Williams-Racette
Rachel Guzman	Jennifer Maina	Susan Schwarm	
David and Ann Harsh	Christine Odt	Sherri Jo St. John	

### OAK LEGACY CIRCLE

*Thank you to donors who named the Oakwood Foundation in their estate plan. The following donors told us during 2020 of their plan to include Oakwood in their estate.*

Anonymous (2)	Ed and Gloria Grys	Jean McLaughlin	Carolyn L. White
Jane Ayer	Tom and Linda Hanson	Jerome and Carol Murphy	Dorothy Whiting
Ralph and Catherine Bayer	Frances Johnson	Lois Schulz	
Julie Eyers	Howard and Judith Landsman	Cliff Voegeli*	
Judy Fenske	Kit-Yin Ling	John and Nancy Webster	

*\*In Memoriam*

## PRESIDENT'S CIRCLE

*The President's Circle recognizes lifetime giving of \$100,000 or more.*

Anonymous (2)

Norma A. Brooks

## LIFETIME GOLDEN OAK SOCIETY

*The Lifetime Golden Oak Society recognizes lifetime giving of \$50,000 or more.*

Anonymous

Eugene Schey

## OAK SOCIETY

*Donors qualify for the Oak Society with calendar year giving of \$1,000. Thanks to the donors who reached this level for the first time in 2020.*

Anonymous (10)

Bert and Diane Adams

Hilde and Julius Adler

Jennifer and Roger Anderson

Jane Ayer

Wil Bloy

Marilyn Boyer

Donna and Chris Bredlow

Jim and Charlotte Clark

Wynn Davies

Jim and Edith Davison

Lynn and Steven Entine

Ulla N. Evans

Julie Eyers

Jonne Fleming

Ed and Gloria Gryg

Greg Hall

Jack Hall

Michael Hall

Reginald and Diane Hislop

Dr. Norman and Nancy Jensen

Joy and Alan Knox

John and Charlotte Larsen

Eileen Lau

Stan and Jan Lillich

Bill Mauerman

Don and Mary Metz

Jon Muchmore and Thomas  
Freeman

Rev. Martha Nack and Dr. Peter  
Bakken

Mary and Gilbert Nankivil

Dean and Esther Nelson

Bob and Mary Jane Nicholson

Jules and Judy Nicolet

Sally Patti

Joan Schmidt

Barbara Schweitzer

Dolores Schwenn

Rev. C. Wayne Shannon

G. Jeanie & Jerry Sieling

Charles and Catherine Sih

David and Elizabeth Smith

Helen B. Stone

Prof. Waclaw Szybalski\*

Carol M. Uglow

Val and Tag Van Winkle

John and Nancy Webster

Dorothy Whiting

Sandy and James Wiederholt

## GOLDEN OAK SOCIETY

*The Golden Oak Society recognizes donors with calendar year giving of \$5,000 or more. Thanks to the donors who reached this level for the first time in 2020.*

Anonymous

Julie Hayward

Margaret Hickman

The Family of Judy Hunter

Kit-Yin Ling

The Loftus Family

Renate Madsen

David and Debra Ann Ristau

Ken and Nancy Ragland

Sarah Roberts

Dick Sargent\*

Margaret Shields

Steve Stern and Florencia  
Mallon

Cliff Voegeli\*

Elaine Waldo

Frederick and Judy Whitemarsh

## REALIZED ESTATE GIFTS

*Oakwood honors the memory of friends whose legacy gifts were gratefully received in 2020.*

David E. Bartlett and  
Marjorie H. Bartlett

Edith E. Brown

Janet L. Gustafson

Hazel Hiemstra

Suzanne Hodgman

Irene M. Meyer

Pauline Sinkule

Jean A. Taffs

Cliff Voegeli

*\*In Memoriam*

# Thank You!

---

*The Oakwood Foundation recognizes those who supported Oakwood in 2020. Thanks to thoughtful gifts from generous donors, Oakwood is able to provide exceptional care and housing, enhance our programming and facilities and continue to care for those who have outlived their financial resources.*

*Your support is meaningful and makes a difference in lives of our residents.*

**We are pleased to recognize below those organizations and individuals whose contributions were received between January 1, 2020, and December 31, 2020.**

---

## BUSINESSES AND SERVICE ORGANIZATIONS

Ayres Painting Co.

The American Gift Fund

Bank of America Charitable Gift Fund

CG Schmidt, Inc.

CliftonLarsonAllen LLP

Coyle Carpet One

Cress Funeral & Cremation Service

Cricket Design Works, Inc.

CTW Abbey Carpet & Floor

Delta Dental of Wisconsin

Eppstein Uhen Architects

Everence Foundation

Econoprint

Fidelity Charitable Gift Fund

Folk Dance Group

JP Cullen

Husch Blackwell LLP

Madison Community Foundation

Madison Literary Club

Madison United Healthcare Linen Ltd.

Madison Weavers Guild

Mehlville Early Childhood Social Committee

Monona Plumbing and Fire Protection, Inc.

National Philanthropic Trust

North American Mechanical, Inc.

Oimoen Electric, Inc.

Parasol Alliance

Quartz Health Solutions, Inc

Renaissance Charitable Foundation Inc.

Schwab Charitable Fund

State Farm Companies Foundation

Thrivent Financial for Lutherans

UBS Donor-Advised Fund

Ultimate Software

UW–Madison Retirement Association

U.S. Charitable Gift Trust

Vanguard Charitable

VRI

Vogel Foundation Inc.

Vogel Bros. Building Co.

## CHURCHES

Advent Lutheran Church  
Bethel Lutheran Church  
Celebration Circle  
Immanuel Lutheran Church  
Endowment Foundation Inc.  
Lutheran Church of the  
Living Christ

Luther Memorial Church  
Mount Olive Lutheran Church  
Our Savior's Lutheran Church

## GIFTS-IN-KIND

Marjorie Briskey  
Eric Gregersen  
Jane Henneberry  
Miye H. Kanazawa  
Donovan Lee and Elizabeth  
Graham Quam

Madison Area Chinese  
Community Organization  
Lynn and Pat Schwantes

## INDIVIDUALS

Anonymous (116)  
Hilde and Julius Adler  
Ann and Mike Albert  
Jeffrey and Patricia Allen  
Ruth Alt  
Barbara Anders  
Amy Andersen  
Edith Ann Anderson  
Jennifer and Roger Anderson  
Jennifer Anderson  
Savanna Anderson  
Janice R. Anderson  
David and Donna Ankle  
Deborah and Tony Ankowicz  
Richard and Alice Appen  
Carolyn R. Aradine  
Karla Cabral Arroyo  
Chickee and Raj Atalla  
Ninel Babinskaya  
Helen Baillies  
Virginia M. Baker  
Ed Baker  
Mark Baker, Chuck Pomazal  
and Jane Baker-Pomazal  
Mark E. Baker  
Monique Banas  
James Banks  
Gale Barber  
Rose Barroilhet  
David E. Bartlett and Marjorie  
H. Bartlett Estate  
David and Susan Batt  
James and Dorothy Batt  
Gordon and Carol Beaty  
Alan Becknell and Karen Hajj  
Sandra and Kenneth Beckwith  
Bryan Bee

Darrell and Michelle Behnke  
Joseph and Marsha Belisle  
Milada Benca  
Holly Benish  
Wendy Benz and Bryan Biggers  
Susan Berg  
Oliver Berge  
Pat Bergstrom  
Norma Berkowitz  
Dave Bertsch  
Norman Berven and Barbara  
Mittelstaedt Berven  
Sarah Biba  
Joyce E. Bisbee  
Harold and Jenny Bitter  
Lorraine Blank  
Christine Boake  
Mike and Anne Bodden  
Judith K. Bodden  
Dave Bohlman  
Kathy Borner  
Richard and Peggy Bourne  
Marylin Boyer  
Donna and Christian Bredlow  
Erik Breilid  
Sara Breitbarth  
Karen Brennan  
Kathryn Briggs  
Joyce Bringe  
Wally Brinkmann  
Edward and Sue Brinson  
Carol Briscoe  
Judith Broad  
Daniel and Joyce Bromley  
Linda and Ronald Brown  
Ross Brown  
Mary Browne

Thomas Bruckner  
Ms. Patricia I. Bruden  
Marilyn and Phil Bruden  
Durwood and Dona Buchheim  
Fred and Lois Buelow  
Charlie and Joanne Bunge  
Connie Burmeister  
Sue Burns  
Audrene Burress  
Stephanie Burris  
Sherri and Curt Bush  
Norma Busser  
Dana Butts  
Jim and Judy Callen  
Ruth Caldiero  
Kay Cantwell  
Wanda Caputo  
Mary M. Miller and Family  
Florame Caril  
Rev. George and Solveig Carlson  
Robert and Sheila Carmichael  
Barbara Carr  
Marie Carter  
Gary and Lynn Case  
Joseph Cassinelli  
Char Caucutt  
Nicholas Chiarkas and  
Judy Olingy  
Darren Chicks  
Donald and Sharon Christensen  
Judy and Arlen Christenson  
Jack and Jan Christian  
Robert and Shelby Christy  
Martha Jo Church  
Dorothy and Dick Circo  
Christa Clapp  
Barbara Clapp

Jim and Charlotte Clark  
Jean Clark  
Sue Cleary Koch  
Crystal Collins  
Laura Cominetti  
Ian Cook  
Lucille Copas  
Joseph Corry  
Timothy Coulthart  
Patricia Cox  
Daniel and Patricia Coyne  
Erin Crawley and Mark Plane  
Jim and Mary Crawmer  
Robert Cronon  
Tiffany Cross  
Marriane Culbertson  
Lapurisima Curry  
Emily Davies  
Wynn Davies  
Beverly C. Davison  
Joyce J. Dean  
Marrie Dean III  
Ms. Denisha M. Degenhardt  
Patricia Delmore and Jene Bork  
Darlene DeLong  
Donna Sereda and John DeNovo  
Diane Derouen and  
Glenn Chambliss  
The Family of Donald Detmer  
Dan and Beth Dibbert  
Becky Dick  
Mary Dick  
Kathy and Larry Dickerson  
Marcia and Joe DiPiazza  
Ronald and Caroline Doersch  
Jon and Mary Doidge  
Susan Dollard

Jane Doughty and David Wood	Lucila Freese	Jack Hall	Shirley and Stan Inhorn
David and Bonnie Downs	Robert and Carol Frykenberg	Greg Hall	Roger Inhorn
Kathy Durand	Gayle Fuguitt and Tom Veitch	Betsy Halpern	Christa Iverson
Winnie Durkin	Glenn and Martha Fuguitt	Ron and Joan Halverson	Tim Jackman
Tom and Megan Durkin	Graham and Margaret Fuguitt	Dorothy E. Halverson	Jessica Jakab-Mathys
Joseph Durkin	Donna Fullerton	Wava Haney	Catherine and Philip James
Ray Dyck and Brenda Aronowitz	Jeffrey and Jane Furst	Harlan Hansen	Dr. Norman and Nancy Jensen
Dorothy Dyreson	Dianne Gagliano	W. Lee Hansen	Ray W. Johnson
Patrick and Lloyd Eagan	Rosalee Gander	Joan Hanson	Beth and Derek Johnson
WHA Quality Staff	Ed Garvoille	Cindy Harris	Janice Johnson
Mary Eich	Peg and Dan Geisler	Karen Harris	Brian and Elizabeth Johnson and Virginia R. Johnson
Dorothea Eichhoff	Rev. Dr. Jack A. Geistlinger	David and Ann Harsh	Frances Johnson
Jane Eisner	Phyllis S. George	Chiyoko Hasegawa	Ralph Johnson
Al and Ann Ellingboe	Claire Gervais, MD	Hans and Karin Hauser	Jeff and Kathy Johnson
Jon and Crystal Enslin	Barbara Gessner	Betty B. Hayward	Rev. Edward and Lorraine Johnson
Lynn and Steven Entine	Vernon and Mary Jane Getlinger	Julie Hayward	Richard Jordan
Bernice E. Erickson	Terry Gibson	Phillip and Nancy Hazeldine	Madhu S. Joshi
Necla Erokay	Roy Gibson	Jean Hedden	Maria Justiliano
Dr. Alida Evans and Mr. Joseph Newmann	Debbie and Todd Giesfeldt	Veronica and Parry Heide	Lorine E. Kahl
Mary Evans	Sharon and Colin Godding	Lois Heilman	Edwin Kaiser
Ulla N. Evans	Stan Goldfarb and Sandra Arnn	Cheryl Heilman	Gordon and Lois Kane
Betty Evanson	Gordan Golz	Jenna Heim	Dawn Karn
Kathy Evert and Jill Jambura	Greg and Nancy Gorder	Donald Helfrecht	The Mrs. Merle Sommerfeldt Family
Gloria Evert	Gary and Mallory Gorman	Sue Helland	Brian and Mary Kaye
Julie Eyers	Linda and Bernie Gorman	Karin Hendrickson	The Kayser Family
Bill and Barbara Fagerstrom	Marion Gotzion	Sara Henning	Frederick Kelcz and Sheryl Popuch
Sherry Faley	Victoria Gouldthorp	Pat and Dee Henry	Katrina Keller
Richard Feldmann	Victoria Gouldthorp	James M. Hilgendorf	Patty Keller
Judy Fenske	Marilyn Graf	Dennis and Vicki Hill	Mary Kelley and Family
Kathy Fenske	Marilyn Graf	Reginald and Diane Hislop	Kelley Family
Jan Ferris	Marilyn Graf	Reginald and Diane Hislop	Mary King
Polly Field	Gary Green and Leann Tigges	Reginald and Diane Hislop	Jill Kittel
David Finch	Sharon Griesbach	Reginald and Diane Hislop	Duane and Nancy Kittleson
Helen F. Findley	Laura Grimm	Reginald and Diane Hislop	Larry D. Klatt, II
Lisa and Marshall Flax	Kathy Groth	Reginald and Diane Hislop	Chris and Marge Kleinhenz
Jonne Fleming	Phyllis Guggemos	Reginald and Diane Hislop	Audrey Klement
John Flynn	Carl and Mary Gulbrandsen	Reginald and Diane Hislop	Genya Kleyman
Wes and Anne Foell	Carl and Mary Gulbrandsen	Reginald and Diane Hislop	Sherri Kliczak
Mary Fontaine	Gerald Gunderson	Reginald and Diane Hislop	Maria and William Klubertanz
Aubrey R. Fowler	Judith Gunkel	Reginald and Diane Hislop	Kathleen Knapp
Donna B. Fox	James and Sharon Gutenberger	Reginald and Diane Hislop	Mary Knapp and James Klein
Donna Fox	Rachel Guzman	Reginald and Diane Hislop	Lu Kness
Burnell Franke	Robert Gwynne	Reginald and Diane Hislop	Kathleen Knox
Mark and Janice Franzen	Jeffrey Hackel	Reginald and Diane Hislop	Emilie Knutson
Robert and Linda Frautschy	Mary and Gilbert Nankivil	Reginald and Diane Hislop	
Doris M. Fredricksen	Ed and Nancy Haerter	Reginald and Diane Hislop	
	Magdalene Hagedorn	Reginald and Diane Hislop	
	Ilene M. Hagman	Reginald and Diane Hislop	
	Kathryn Hall	Reginald and Diane Hislop	
	Michael Hall	Reginald and Diane Hislop	



Steve and Pat Koch	Bob, Jan and Elle	Samuel and Nadine Miller	Rodney Nordby and Nancy Anderson
Mary Jo Kopecky	Peg Luby	June Miller	Richard and Sandra Nuernberg
Tyler Koston	Erika Luckow	Clinton Miller	Sanny Oberhauser
Wilma Kraak	John Ludwig	Chris, Nancy and Faith Miracle	Edith Odell
Caitlin Krist-Simonis	Jane Ludwig	Fumiko Miyazaki	Christine Odt
Raymond and Carol Krizmanic	David and Ann Lueder	Beverly Mogensen	Nancy Okey
Sarah and David Kruger	Alan and Rona Lukazewski	Nicole Mohrmann	David Olmos
Bruce Kuehl	Bob and Mary Lunda	Sharon Moll-Brennan and Patrick Brennan	Darcie Olson
Crystal Kurtz	Ann Lynch	Mary Molstad	Patricia Olson
Alice Kvamme	Jim and Judy Maas	Agnes A. Moore	Anna Olson
Lois Kvammen	Ron and Carol Mach	Robin Moore-McElroy	Richard and Mary Ann Olson
Janice and Thomas La Due	Susan H. Mach	Peder and Jeanne Moren	Ann Orchard
Jonathan and Danielle Laatsch	Elizabeth Madden	Tara and Wade Morris	TJ Osborn
Patricia Ladwig	Renate Madsen	Stephen D. Morton	Amber Otis
Carol Ladwig	Jennifer Maina	David and Rhonda Mossner	Brianna Otto
James and Kathryn Lange	Maija Maki-Laurila	Jon Muchmore and Thomas Freeman	Bernice Owen
Amy Lanphear	Florencia Mallon and Steve Stern	Alex Mulligan and Kathy O'Leary	Prof. Susan C. Paddock
Pamela Larmee	Beverly J. Manner	Maureen Mullins	Megan Parrell
Larry and Carol Larrabee	Cara Manning	Beth Murley	Tom Pasic and Sharon Fry Pasic
Charlotte Larsen	Ms. Vranna Manor	Patricia Murphy	Pat Paska
John and Mary Laub	H. B. Maroney, II	Jerry and Carol Murphy	Brenda Paske
Don and Susan Lauffer	Mary Anne Marsden	Marje Murray	Sally Patti
Heidi Lauhon	Biff and Josie Mautz	Liz Murray	Diego Paulino
Pamela and Anthony Lavalliere	Eugene Marvin	Bernadine Murvar	Stanley G. Payne
Barbara Lawton	Katherine Masden	Nyla Musser	Jane Pazour
Ralph and Jasbeena Layman	John and Ellen Mast	Susan Myers	Dave and Gretchen Pearson
Karen Lazar	Carol and John Mathis	Rev. Martha Nack and Dr. Peter Bakken	Robert and Joan Pekowsky
Joanne Lee	Edward Matkom	Robert Nagel	Kato Perlman
Nancy V. Lee	Libby Matkom	Bobby Nakkula	Ruth Pesch
Cheryl Leopold	Jeffrey and Helen Mattox	Beverly Naylor	Elena Peters
Sandra and Allan Levin	Joanne McCarthy	Elaine Neitzel	Mary Petersen
Brad and Suzanne Liddle	Gordon and Janet McChesney	Kay Nelson	Gil Peterson
Mary B. Liebig	Nancy McClurg	Dean and Esther Nelson	Don and Marion Peterson
James Lien	Kathleen McElroy	Sue Nelson	Gloria Pettersen
Stan and Jan Lillich	Mike and Barb McEvelly	Warren Nesbitt	Janet Pfeifer
Margaret (Peggy) Lindberg	Pat and Chris McGee	Jacqueline Ness	Bonnie Phaneuf
Arlene and Charles Linder	Hildy McGown	Thelma Newman	Tony Pharo
Dave and Ruth Lindorff	Barbara McGrath	Namgyal Ngodup	Renae Pingel
Janet R. Lindsey	Kirsten J. McKee	Bob and Mary Jane Nicholson	Robin Plaisance
Kit-Yin Ling	Jean McLaughlin	Jules and Judy Nicolet	Roger and Pat Planton
Ron Linker	Bill Mauerman	Solveig Nielsen	Marion Pluymers
The Family of Beth Lipp	Vicki Meseberg	Ellie Ninemeier	Carol Polarski
Robert Loeffler	Don and Mary Metz	Bill Noltemeyer	Mary and Doug Poole
The Loftus Family	Rachel Meudt		Greg Pope
Charlotte R. Looker	Susan Bolyard Millar		Elizabeth Powitzky
Barb and Greg Louden	Kelly Jo Miller		Fred Prange
Joanne Lovell			

Lucy Prescott	Brian and Jane Sage	Dawn Shawkey	Ms. Joyce Thorson
Virginia Steeper Preston	Jeanne Saiki	Marilyn Shepard	Loise Thuku
Bob and Jane Pricer	Steve and Mary Salzieder	Jean Sherman	Peter Thurlow
Theora Proctor	M. Janaan Sampson	Margaret Shields	Sally Thwing
Sarah Raemisch	Steve and Robin Potter/Audrey Sander	Betty Shovers' Family	Norris Tibbetts
Ken and Nancy Ragland	Ms. Ruth M. Sanderson	G.Jeanie & Jerry Sieling	Betty and Dean Tibstra
Jason Rahn	Virginia Saxton	Charles and Catherine Sih	Lloyd and Cleo Tindall
Rose Randall	Betty Scannell	Audrey Simon	Donna Todd
Kathleen Rasmussen	Nicole Schaefer	Rochelle B. Sincox	Nancy Miles Townsend
Miriam Ratner	Elizabeth Schalmo	Bill and Dawn Smith	Jim and Georgi Tracy
Shirley Rayes	Janet Schewe	Margaret and Lanny Smith	Sharon Trimborn
Chuck and Helen Read	Eugene Schey	Todd Smith and Jill Bradshaw	Wendy Turner
Kathleen Reed	David and Mary Ann Schiller	Donald and Ann Smith	Carol M. Uglow
Carol and Don Reeder	Patricia Schlafer	Helen Smith	Sue and Tom Ullsvik
Valerie Renk	Don and Marietta Schlutter	David and Elizabeth Smith	Donna Ulteig
Stephen and Margery Resan	Warren and Peg Schmidt	Peter and Mary Sobol	Faye Underdahl
Herman Reschke	Joan Schmidt	Dick Spencer	Ray and Joan Unrein
Steven Reuschlein	Darlene Schneider	Sherri Jo St. John	Marie Van Beek
Claire M. Rider	Sue Schneider	RoseMary Stassi	Valerie Van Horn
Adeline Riemenschneider	Philip Schoech and Rita Sweeney	Marion Steele	Susan and Scott Van Steen
Lindsey Ripp	Beverly Schrag	Charlotte S. Stein	Val and Tag Van Winkle
David and Debra Ann Ristau	Karen Schroeder	Dan and Susan Stein	Keith and Melissa VanLanduyt
Sarah Roberts	Jamie and Rhoda Schroud	Kathy Steiner	Kathleen Verrill
Ellen Roberts	Larry and Holly Schuetz	Richard Steinhofer	Bob and Terri Vetter
Ellen Roche	Bret Schuhart	Janet Steinhoff	Dick Vilstrup
Ron and Diane Rockow	Mrs. Carolyn Schultz	Elaine Stevens	Kim Viney
Rebecca Rogers	Myra Schultz	Helen B. Stone	Jayne Vivian
Amy and Vance Roh	Debra Schultz	Theodore Stresemann and Vic Wayland	Carol Viviani
Edward and Gretchen Romanowski	Patricia Schulz	Jordan Stromme	Betty Viviani
Steven and Laura Rose	Susan Schwarm	Peter and Denise Strub	Paula Volpiansky and Larry Chapman
Ruth Rosen	Daniel Schwarz	Angela Studnicka	Joachim and Carol Von Elbe
Penny Ross	Mark Schwarz	Mary Stuibier	Janice Von Haden
Daniel and Sally Rossmiller	Barbara Schweitzer	Charles and Diane Stumpf	Alex Wagner
Dick and Lois Rossmiller	Dolores Schwenn	Betty Sullivan	Andy Waity
Samuel Rothrock	Betty Scott	Eileen and Tom Sutula	Joanna and Kenneth Walch
Cara Rouse	Walter and Lynn Scott	Bob Tabachnick	Elaine Waldo
Sally Rowe and Bill Bauer	Leo and Lorna Sebald	James W. Taylor	Estelle Walker
Richard Rowell	Ms. Donna Sereda and Mr. Jay DeNovo	Martha Taylor and Gary Antoniewicz	Ann Wallace
Gerald and Nancy Rude	Winnie and Dick Severson	Doris E. Teschner	Alberta Walling
Rhonda and Bill Rushing	Claire Shaffer	Gerald and Priscilla Thain	Lynn Waterman
Joyce Russell	Joan Shands	Pat and John Thiesenhusen	Denny and Mary Weaver
Diana Russell	Rev. Susan Shands	Caryn and Jeff Thole	John and Nancy Webster
Doris Russell	Rev. C. Wayne Shannon	Kris and Tom Thommesen	George and Iris Weiland
Anthony Russo	Virginia A. Shannon	Chas and Kay Thompson	Warren and Marie Weinstein
J.G. Sabatke	Ron and Deb Sharpee	Frank Thompson	Mareda Weiss
Veronica Saeman			Heather Wells

Marlene Welton	Jan Whitcher	Donald and Deborah Williams	Joseph and Susan Wolters
Betty Lee Wendland	Amy Whitcomb	Calvin and Marjorie Williams	Lauretta Wood
Daniel and Jeanne Wendtland	Gerald Whitcomb	Gloria Williams	William and Mardelle Wuerger
Lori and Mark Werbeckes	Paul and Margaret White	Sarah Williams-Racette	Peggy York
Isabel and William Werner	Frederick and Judy Whitemarsh	Clifford Wilson	Robert Zucker
Mel Wesley	Dorothy Whiting	Benjamin and Donna Wilson	Wendy Zucker and David Sahakian
Robert and Lucille Westervelt	Bernadine Wideen	Deanna Wilson	Alan Zuckerman
Gerry Wettersten	Sandy and James Wiederholt	Joanne Winkelman	Margie and Keith Zutter
Robert Whalley	Neil F. Wienke	James Wiskowski	Karen and Doug Zweizig
Dorothy Wheeler	Doyle and Betty Wilke	Marilyn Wolf	
Jan Whelan	Jill Wilkis	Richard and Ellen Wolman	

## IN MEMORIAM

*We recognize the following individuals posthumously for their contributions received between January 1, 2020 and December 31, 2020*

Anonymous	Janet L. Gustafson	Dorothy Luening	Pauline Sinkule
Beth M. Affeldt	Hazel C. Hiemstra	Donna Marie Marx	Lorayne M. Smythe
Joy B. Anderson	Carol M. Hinrichs	Pat Mast	Prof. Waclaw Szybalski
Dorothy Baltes	Donna J. Hipenbecker	Irene M. Meyer	Gene A. Thieleke
Daved E. Bartlett and Marjorie H. Bartlett	Robert Hodge	Carol Mullins	Clifford Voegeli
Anna B. Bender	Suzanne Hodgman	Duane D. Neitzel	Susan Whelan
Frances A. Bordson	James M. Horsfall	Walton Nelson	Richard Wood
Edith E. Brown	Robert E. Huhn	Edward Newman	
Joyce Bruckner	Irene Ilgen	Kitt Nordeen	
Ellen E. Cross	Jacquelyne Jenkins	Charles A. Romstad	
George Durnford	Wallace Lemon	John Russell	
	Linda Lerner	Dick Sargent	



**OAKWOOD**

OAKWOOD LUTHERAN  
SENIOR MINISTRIES

6205 Mineral Point Road  
Madison, WI 53705

Non-Profit Organization  
U.S. POSTAGE  
**PAID**  
MADISON, WI  
PERMIT NO. 1980

If your mailing address has changed or you no longer wish to receive the *Oakwood Outlook* newsletter, please contact **Heidi Lauhon** at [heidi.lauhon@oakwoodvillage.net](mailto:heidi.lauhon@oakwoodvillage.net) or call 608.230.4285.



OAKWOOD  
**Outlook**

*News from Oakwood Lutheran Senior Ministries*

SPRING 2021



## Creative Pursuits

Learn about Foundation Director of Development Dave Mossner's volunteer service and creative pursuits.

▶ [READ THE ARTICLE ON PAGE 26](#)